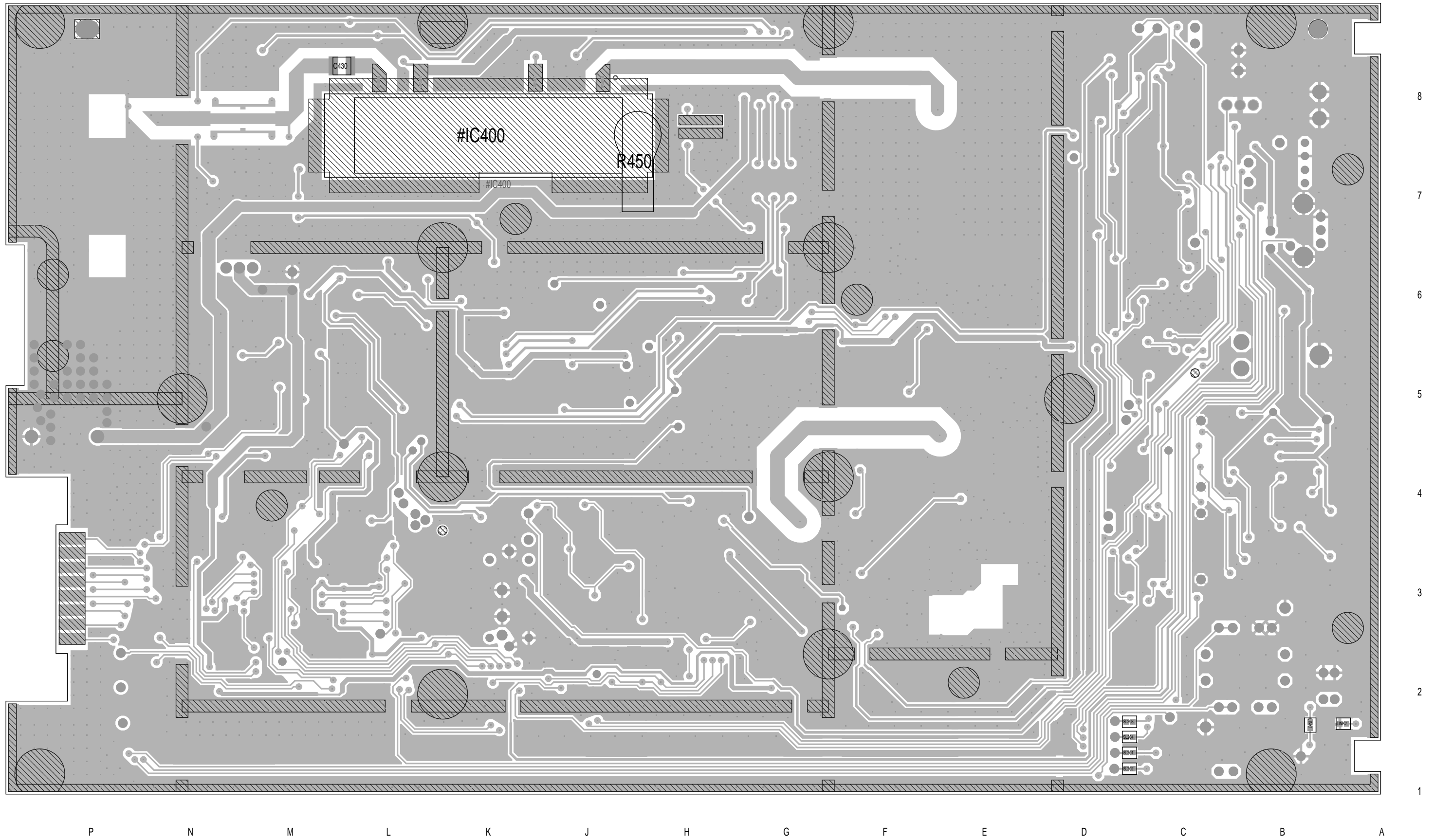
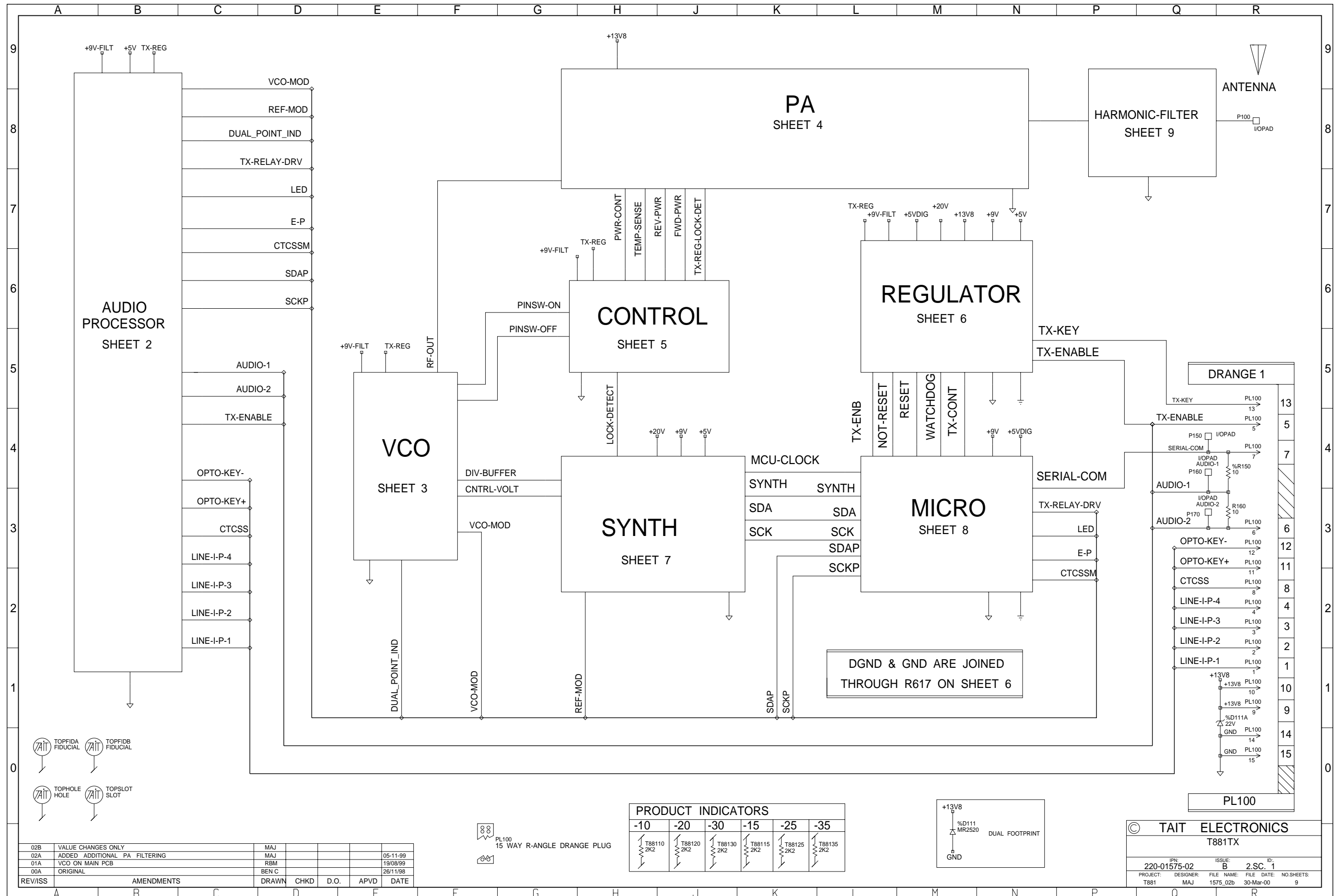


**ATI** 220-01575-02 T881TX

T881 PCB Layout - Top Side  
220-01575-02

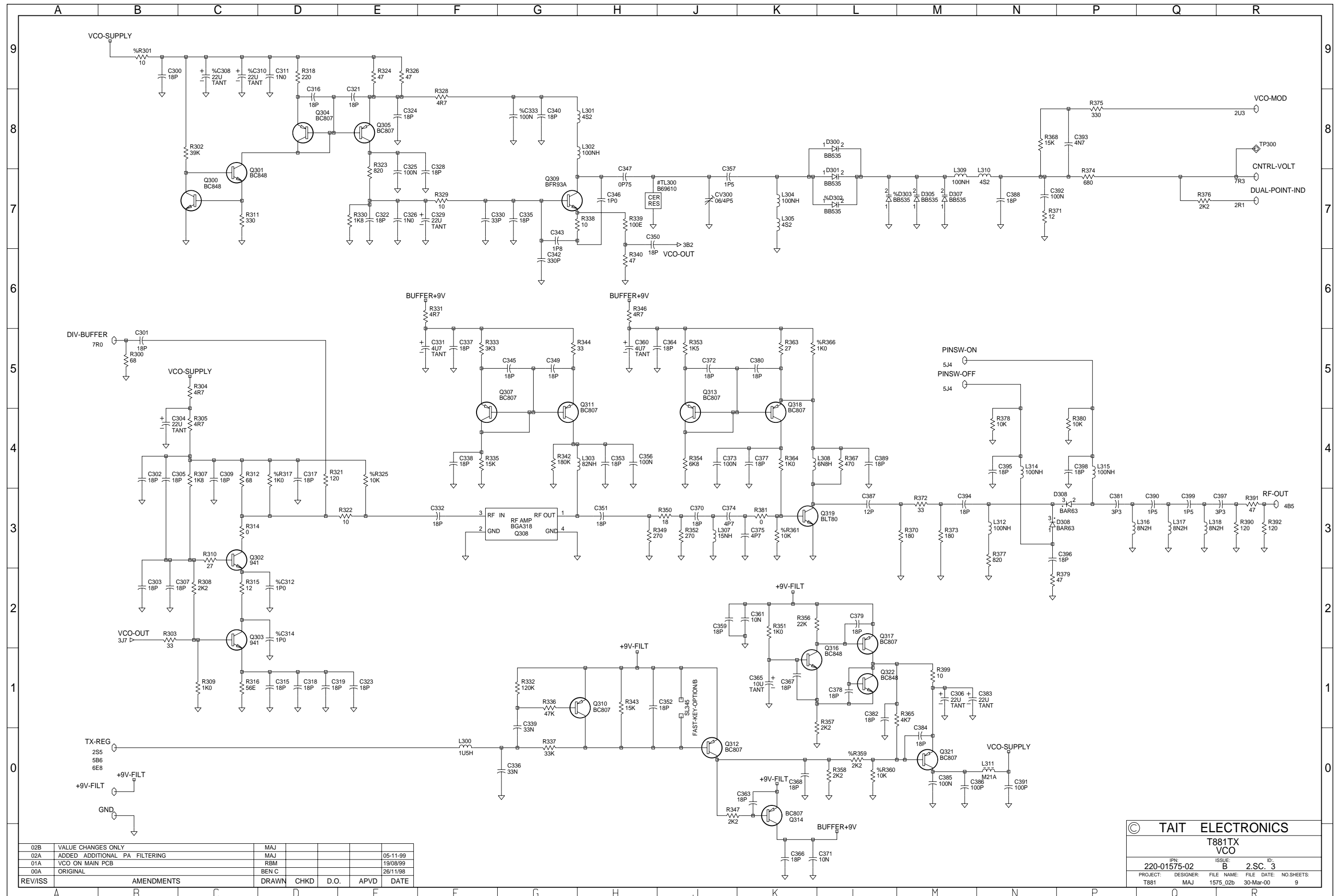


T881 PCB Layout - Bottom Side  
220-01575-02



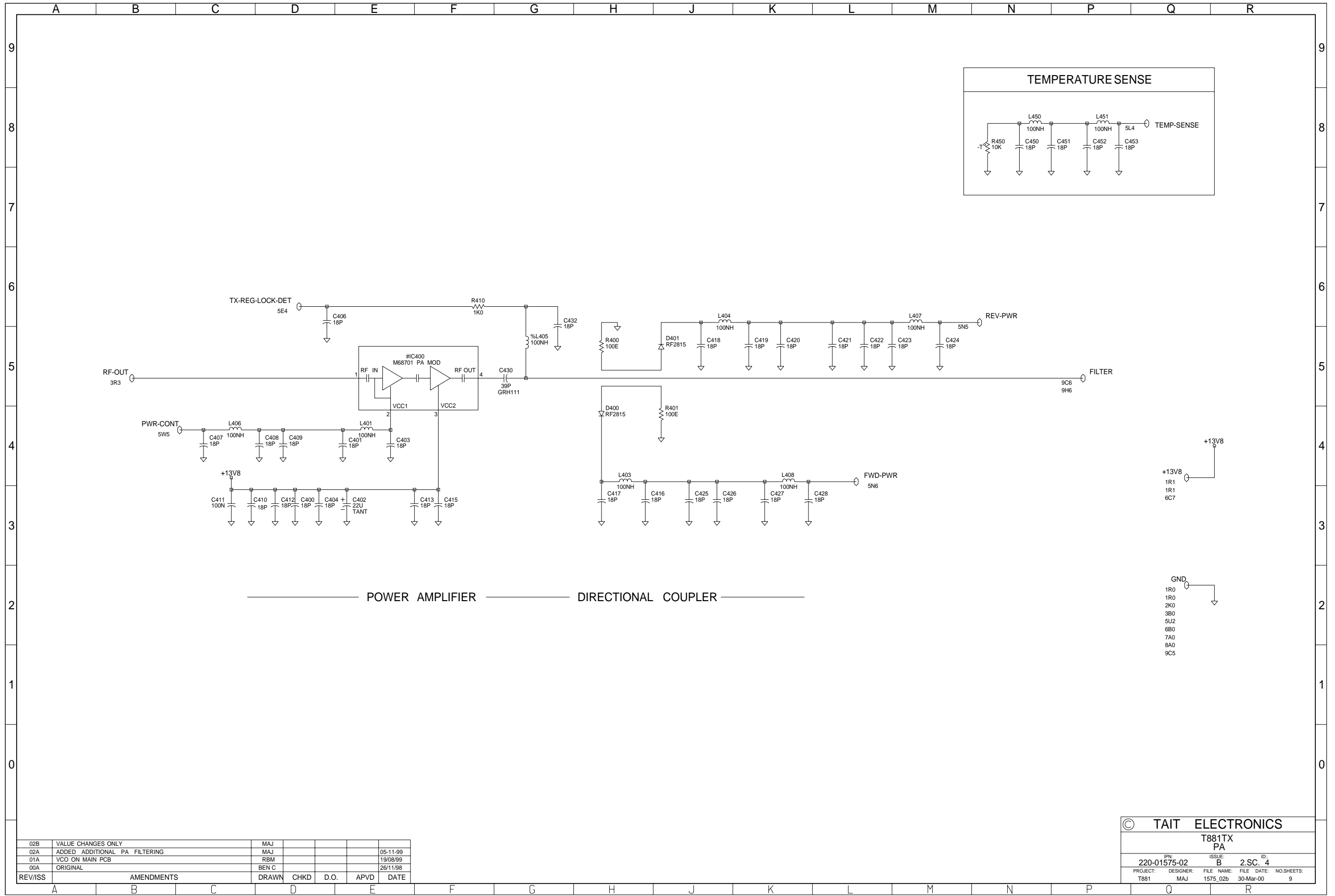
Sheet 1 - T881 Transmitter Overview  
220-01575-02





02B	VALUE CHANGES ONLY	MAJ				
02A	ADDED ADDITIONAL PA FILTERING	MAJ				05-11-99
01A	VCO ON MAIN PCB	RBM				19/08/99
00A	ORIGINAL	BEN C				26/11/98
REV/ISS	AMENDMENTS	DRAWN	CHKD	D.O.	APVD	DATE

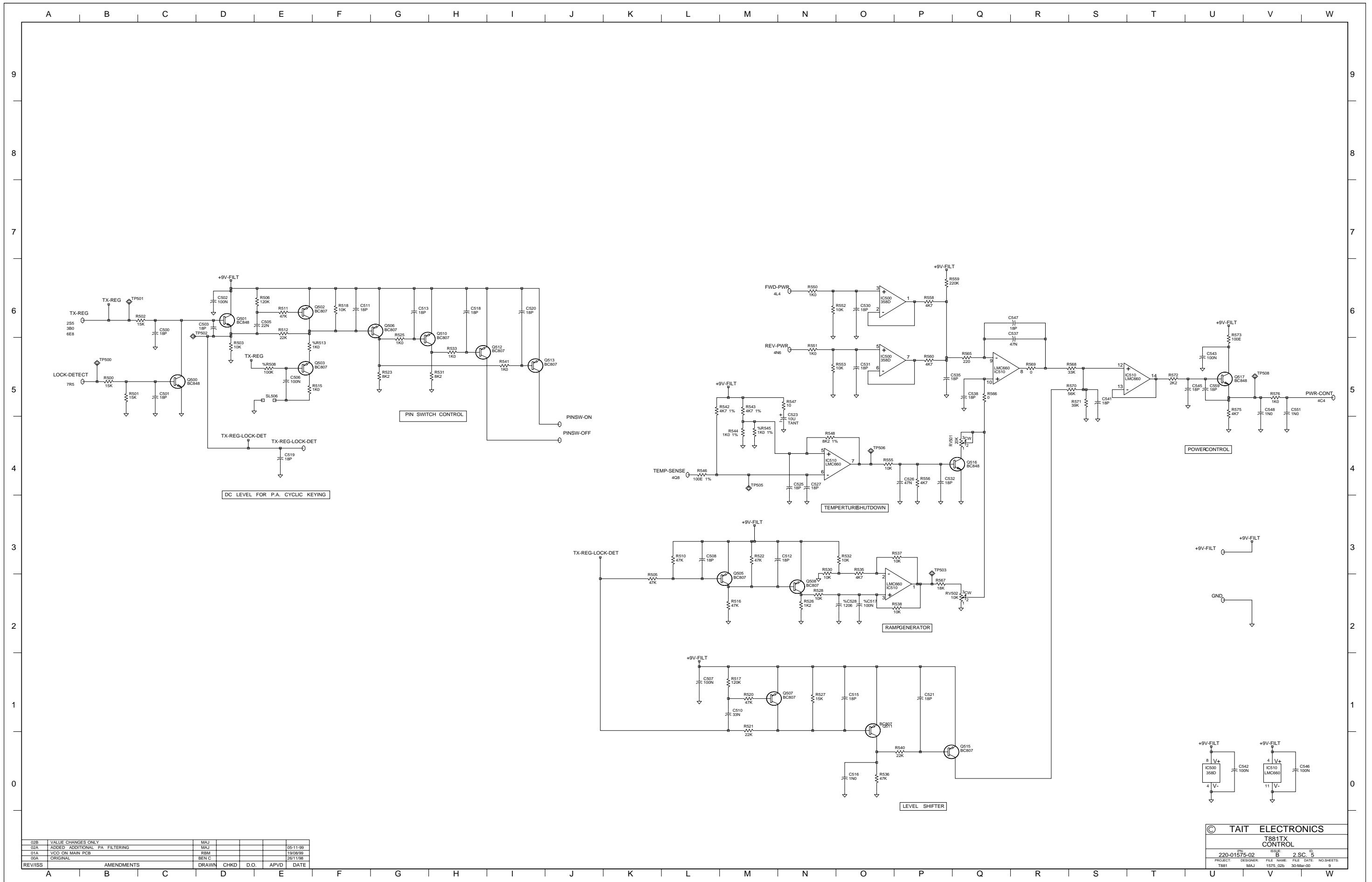
© TAIT ELECTRONICS					
T881TX VCO					
IPN:	220-01575-02	ISSUE:	B	2.S.C.	3
PROJECT:	T881	DESIGNER:	MAJ	FILE NAME:	1575_02b
		FILE DATE:	30-Mar-00	NO.SHEETS:	9



POWER AMPLIFIER      DIRECTIONAL COUPLER

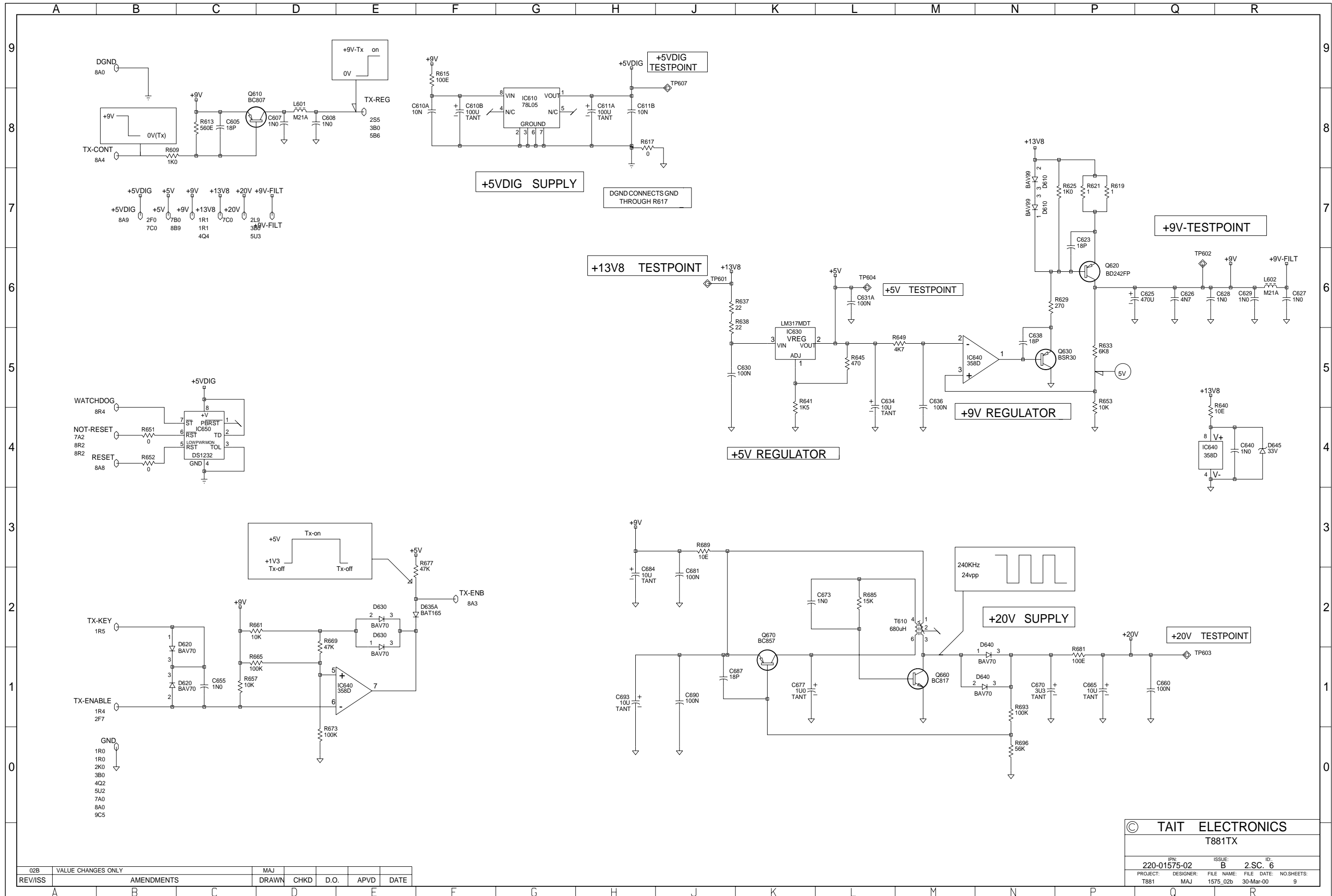
02B	VALUE CHANGES ONLY	MAJ				
02A	ADDED ADDITIONAL PA FILTERING	MAJ				05-11-99
01A	VCO ON MAIN PCB	RBM				19/08/99
00A	ORIGINAL	BEN C				26/11/98
REV/ISS	AMENDMENTS	DRAWN	CHKD	D.O.	APVD	DATE

© TAIT ELECTRONICS			
T881TX PA			
IPN:	ISSUE:	ID:	
220-01575-02	B	2.S.C. 4	
PROJECT:	DESIGNER:	FILE NAME:	FILE DATE: NO.SHEETS:
T881	MAJ	1575_02b	30-Mar-00 9



02B	VALUE CHANGES ONLY	MAJ			
02A	ADDED ADDITIONAL PA FILTERING	MAJ			05-11-99
01A	VCO ON MAIN PCB	RBM			19/09/99
02A	ORIGINAL	REN G			25/11/98
REV/ISS	AMENDMENTS	DRAWN	CHKD	D.O.	APVD

© TAIT ELECTRONICS	
T881TX CONTROL	
PROJECT: 220-01575-02	DESIGNER: MAJ
FILE NAME: 1575_02B	FILE DATE: 30-08-00
NO. SHEETS: 9	2 SC. 5

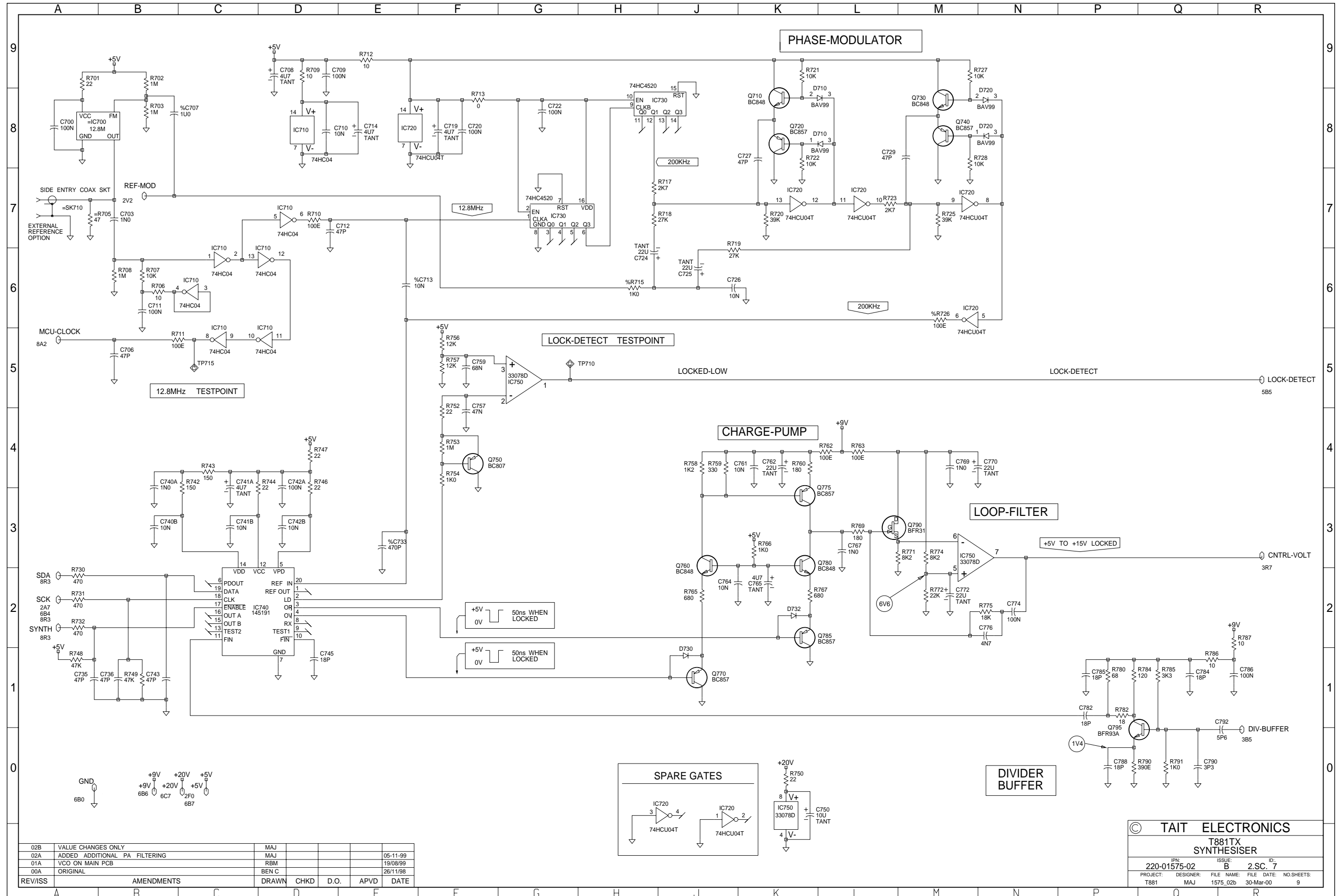


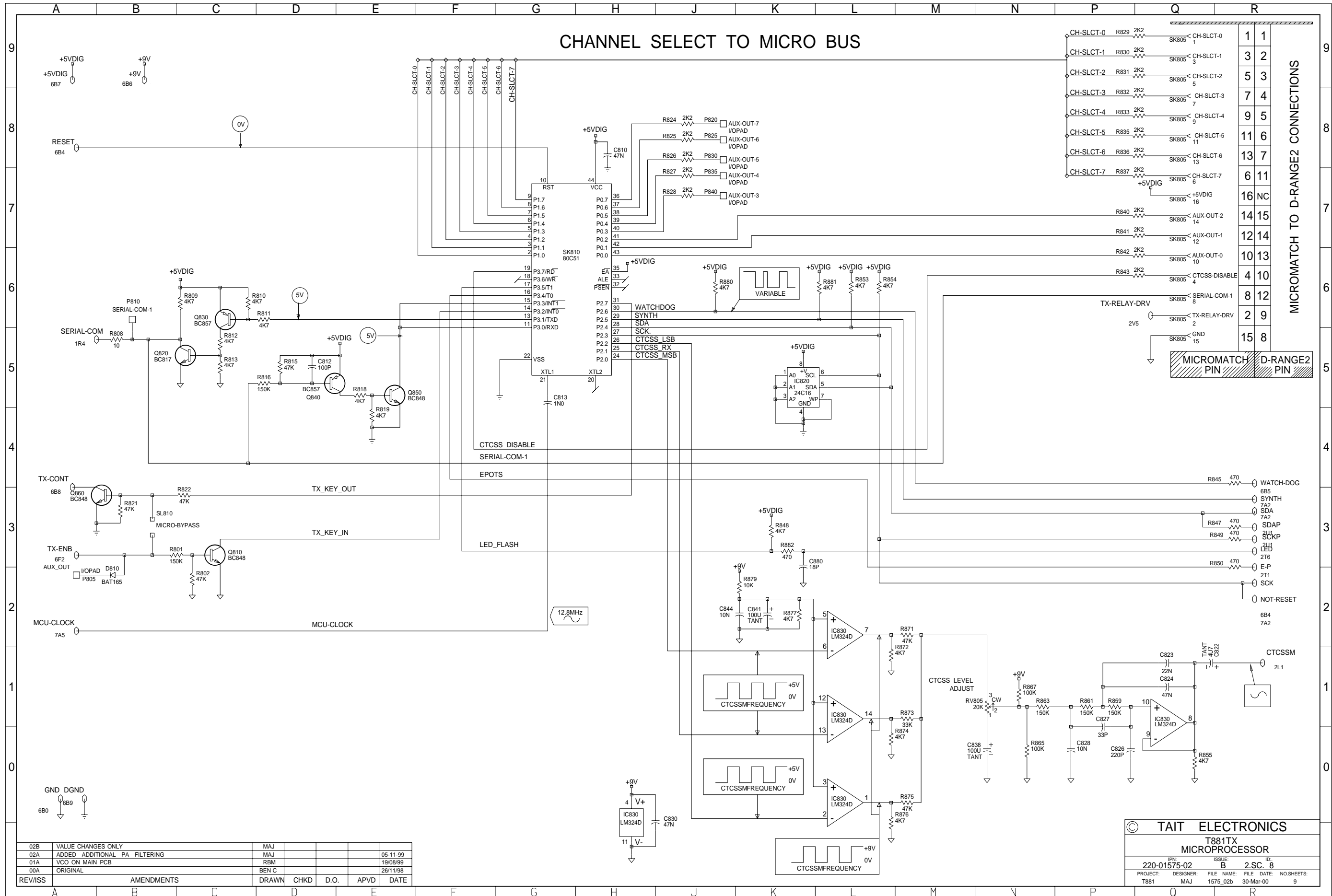
02B	VALUE CHANGES ONLY	MAJ	CHKD	D.O.	APVD	DATE
REV/ISS	AMENDMENTS	DRAWN	CHKD	D.O.	APVD	DATE

© TAIT ELECTRONICS  
T881TX

IPN: 220-01575-02	ISSUE: B	ID: 2.S.C. 6
PROJECT: T881	DESIGNER: MAJ	FILE NAME: 1575_02b
		FILE DATE: 30-Mar-00
		NO.SHEETS: 9







**MICROMATCH TO D-RANGE2 CONNECTIONS**

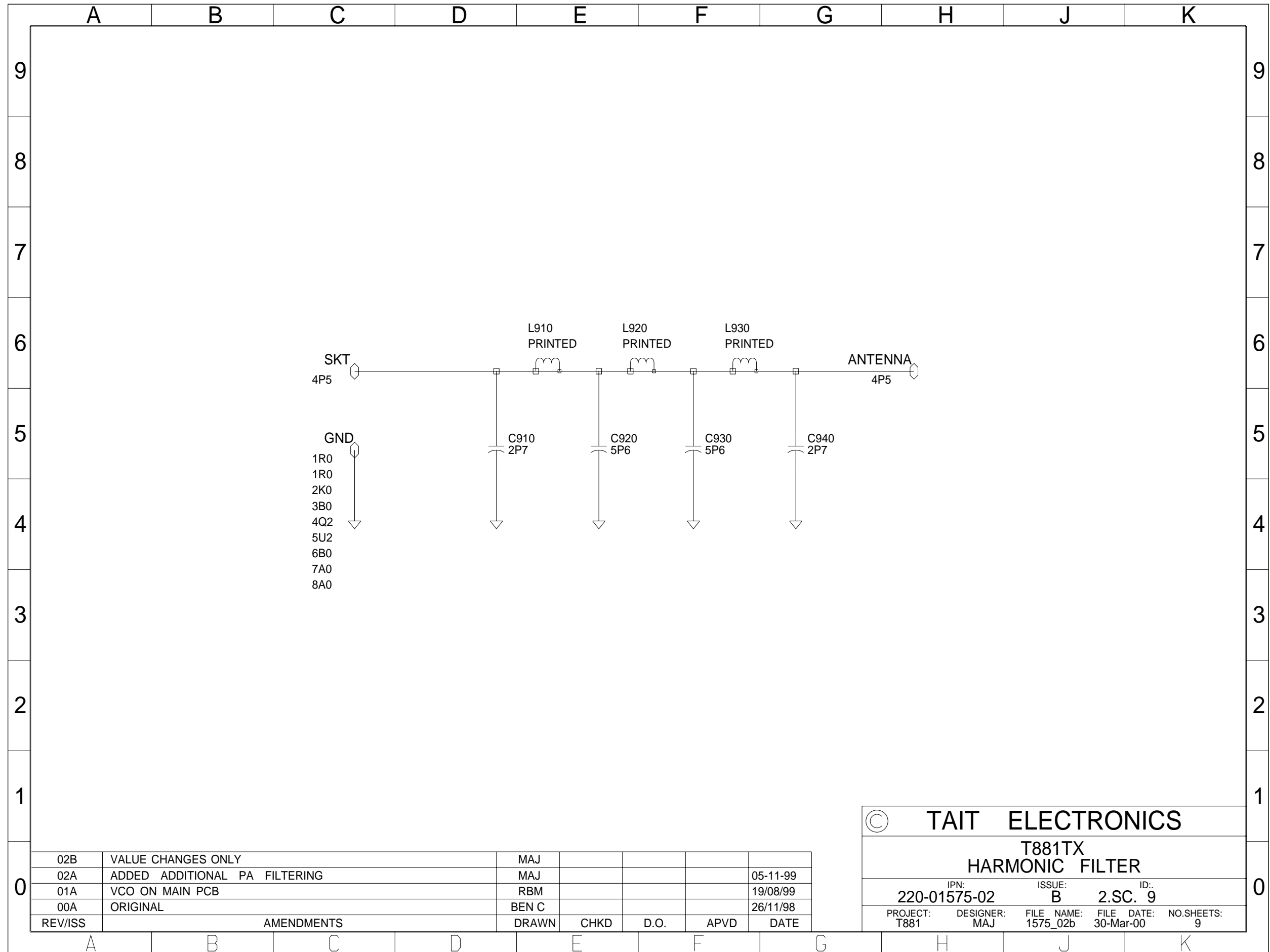
CH-SLCT-0	R829 2K2	SK805	CH-SLCT-0	1	1
CH-SLCT-1	R830 2K2	SK805	CH-SLCT-1	3	2
CH-SLCT-2	R831 2K2	SK805	CH-SLCT-2	5	3
CH-SLCT-3	R832 2K2	SK805	CH-SLCT-3	7	4
CH-SLCT-4	R833 2K2	SK805	CH-SLCT-4	9	5
CH-SLCT-5	R835 2K2	SK805	CH-SLCT-5	11	6
CH-SLCT-6	R836 2K2	SK805	CH-SLCT-6	13	7
CH-SLCT-7	R837 2K2	SK805	CH-SLCT-7	6	11
		SK805		16	NC
		SK805	AUX-OUT-2	14	15
		SK805	AUX-OUT-1	12	14
		SK805	AUX-OUT-0	10	13
		SK805	CTCSS-DISABLE	4	10
		SK805	SERIAL-COM-1	8	12
		SK805	TX-RELAY-DRV	2	9
		SK805	GND	15	8

REV/ISS	AMENDMENTS	DRAWN	CHKD	D.O.	APVD	DATE
02B	VALUE CHANGES ONLY	MAJ				05-11-99
02A	ADDED ADDITIONAL PA FILTERING	MAJ				19/08/99
01A	VCO ON MAIN PCB	RBM				26/11/98
00A	ORIGINAL	BEN C				

© TAIT ELECTRONICS  
T881TX MICROPROCESSOR

IPN: 220-01575-02  
ISSUE: B  
ID: 2.S.C. 8

PROJECT: T881  
DESIGNER: MAJ  
FILE NAME: 1575\_02b  
FILE DATE: 30-Mar-00  
NO. SHEETS: 9



02B	VALUE CHANGES ONLY	MAJ				
02A	ADDED ADDITIONAL PA FILTERING	MAJ				05-11-99
01A	VCO ON MAIN PCB	RBM				19/08/99
00A	ORIGINAL	BEN C				26/11/98
REV/ISS	AMENDMENTS	DRAWN	CHKD	D.O.	APVD	DATE

© TAIT ELECTRONICS					
T881TX HARMONIC FILTER					
IPN:	ISSUE:	ID.:			
220-01575-02	B	2.SC. 9			
PROJECT:	DESIGNER:	FILE NAME:	FILE DATE:	NO.SHEETS:	
T881	MAJ	1575_02b	30-Mar-00	9	

